

LFP

THE HEIGHT OF
PERFORMANCE





Israeli Industrial Batteries Ltd

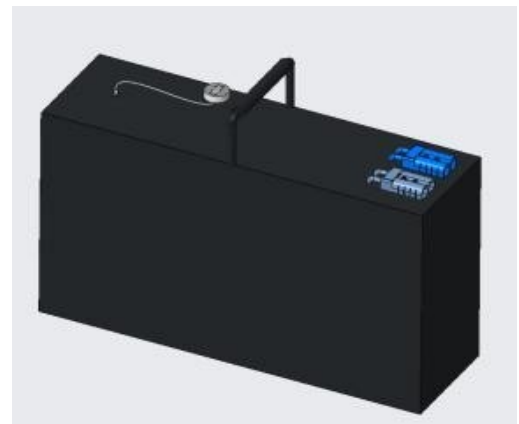
B-LFP24-100P 25.6V 100AH

The LFP 24V 100Ah Motive Power Systems are a family of 24V battery modules and accessories. The 24V family is designed as a drop-in replacement for similar sized lead-acid batteries offering twice the run-time and nearly half the weight. The 24V series is designed for lower voltage, lower power and longer run-time applications. They are built with LFP Technology that offers outstanding intrinsic safety and excellent float and cycle life resulting in low cost of ownership.

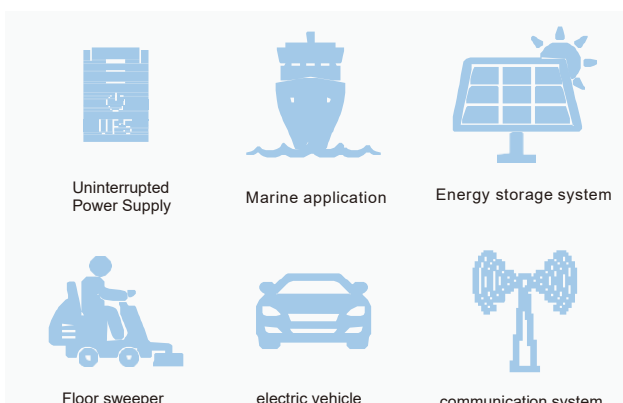
IIB Power delivers safe lithium phosphate energy storage solutions in standard lead-acid battery sizes for a wide variety of applications.

Feature

- Eco-friendly
- Lithium iron phosphate battery (LiFePO₄)
- Currently the safest lithium technology
- Excellent resistance to abuse
- Less than 3% self-discharging
- Maintenance-free, modular, and lightweight Up to 60% weight saving
- Battery monitoring storage history
- Built in safety protection
- Quality guaranteed
- 3-5 Years Warranty
- 15-18 Years Designed service life



Application

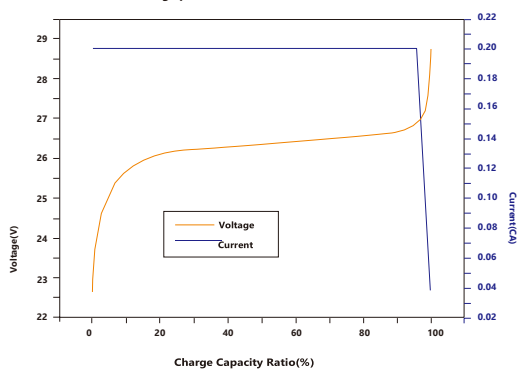
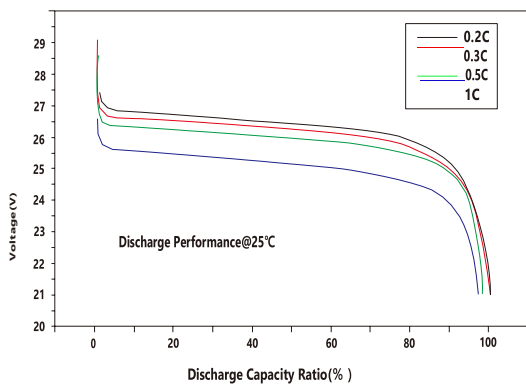


Safe

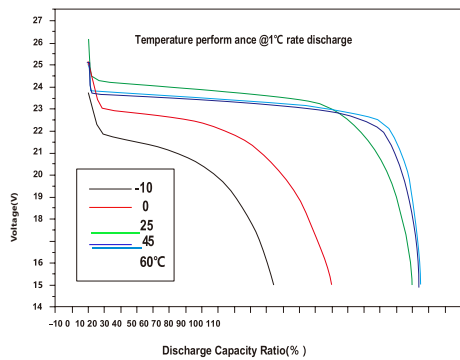
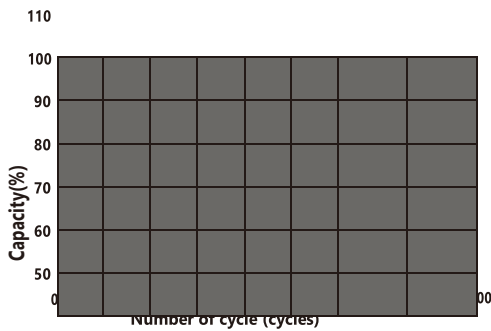
IIB® batteries are based on Lithium iron phosphate battery technology (LiFePO₄). This is the safest Lithium technology available today. On top of that our bespoke casing and electronics further increase safety and durability.

Technology

BATTERIES do not contain lead LiFePO₄ technology is an environmentally friendly way to store energy.



Cycle life With DOD at 25%, 0.5C



ELECTRICAL SPECIFICATIONS

Nominal Voltage	25.6 V
Nominal Capacity	100AH
Energy	2560 WH
Efficiency	99%
Self Discharge	<1% per Month
Internal Impedance	≤50mΩ @50%

DISCHARGE SPECIFICATIONS

Max. Continuous Discharge current	100A
Peak Discharge Current	150A (10 ms)
Standard Discharge current	50A
Voltage at end of Discharge	20V
Capacity @ shipment	50%-60%

TEMPERATURE SPECIFICATIONS

Discharge Temperature	(-20~60 °C)
Charge Temperature	(0~45 °C)
Storage Temperature	(-20~45 °C)

MECHANICAL SPECIFICATIONS

Dimensions (L x W x H)	450x145x260MM
(Approx.)	21KG
Case Material	Iron case
Cell Type	Cylindrical
Chemistry	LiFePO4

CHARGE SPECIFICATIONS

Recommended Charge Current	25A
Maximum Charge Current	50A
Recommended Charge Voltage	28.8-29.2V
Charge mode	CC/CV

COMPLIANCE SPECIFICATIONS

Certifications	CE (battery)
	UN38.3 (battery)
	ROHS2.0 (Cells)
Shipping Classification	UN 3480, CLASS 9



Certifications Applicable to the Design and Manufacture of Lithium Iron Phosphate Batteries

When it comes to reliability, our lithium batteries won't let you down. Contact at www.iib.co.il.

